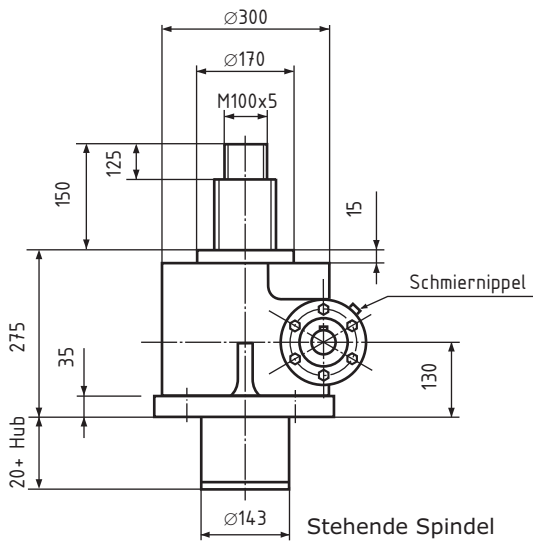
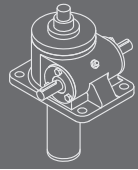
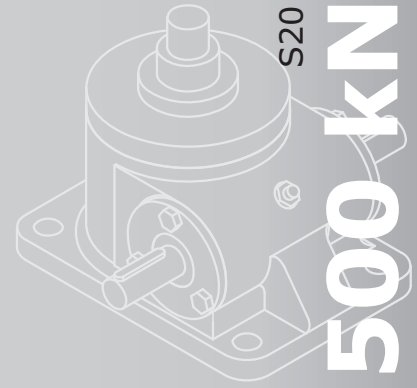
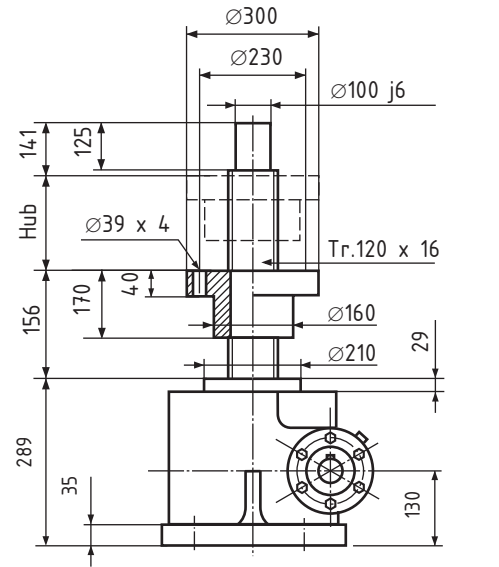


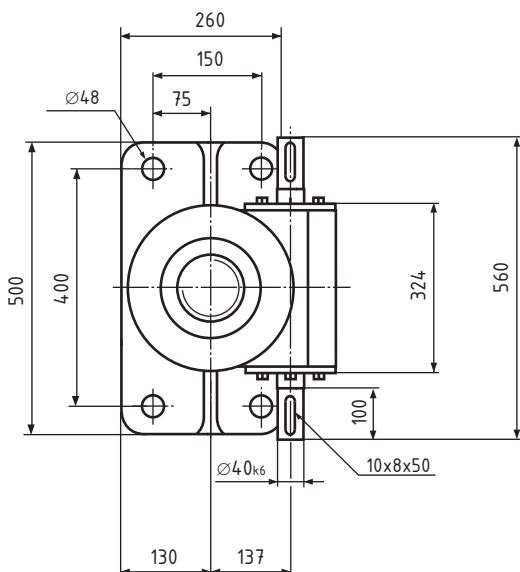
Gelenkkopf GSA X Z S20



Stehende Spindel



Rotierende Spindel



GS X S20

Trapez-Gewindespindel Tr. 120 x 16

Hubkraft 500kN

Übersetzung

Standard 32:1

Schnell 10,66:1

Hub pro Umdrehung

Standard 0,50 mm

Schnell 1,50 mm

Max. Eintriebsdrehzahl 700 1/min

Wirkungsgrad ca. 15 %

Gehäusewerkstoff Stahl

Gewicht ca. 180 kg

N=Standard

R=Rotierende Spindel

Bestellbeispiel:

GS, Baugröße **X**, Variante **R**, **S20**, Hublänge **200**

Bestellnummer: **GS X R S20 200**