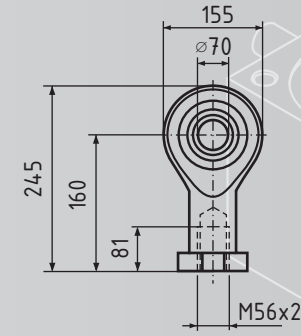
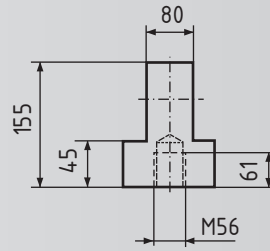
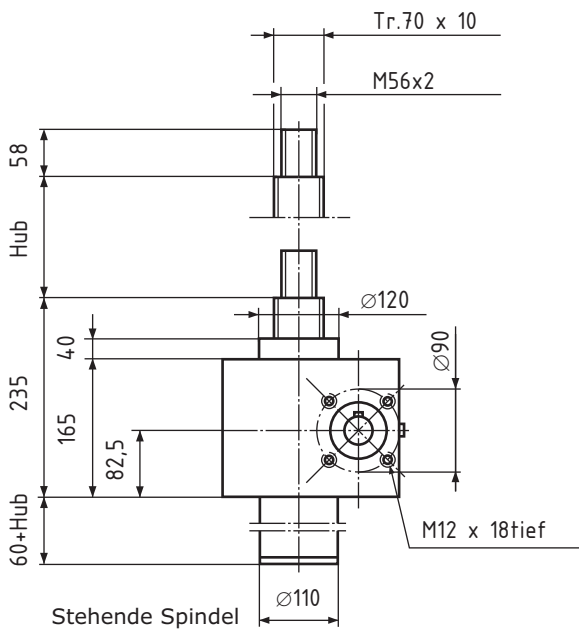
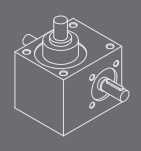


Gelenkkopf GSA VII Z

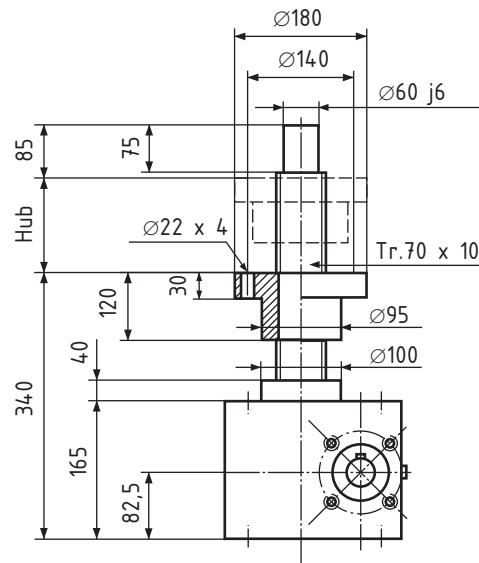


Kugelgelenkkopf GSA VII K

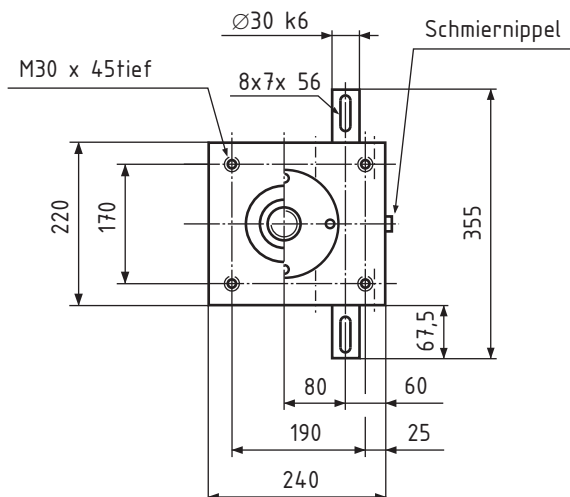
Standard
200 kN



Stehende Spindel



Rotierende Spindel



GS VII

Trapez-Gewindespindel Tr. 70 x 10

Hubkraft 200kN

Übersetzung

Standard 40:1

Schnell 10:1

Hub pro Umdrehung

Standard 0,25 mm

Schnell 1,00 mm

Max. Eintriebsdrehzahl 1000 1/min

Wirkungsgrad ca. 20 %

Gehäusewerkstoff Stahl

Gewicht ca. 70 kg

N=Standard

R=Rotierende Spindel

Bestellbeispiel:

GS, Baugröße **VII**, Variante **N**, Hublänge **350**

Bestellnummer: **GS VII N 350**