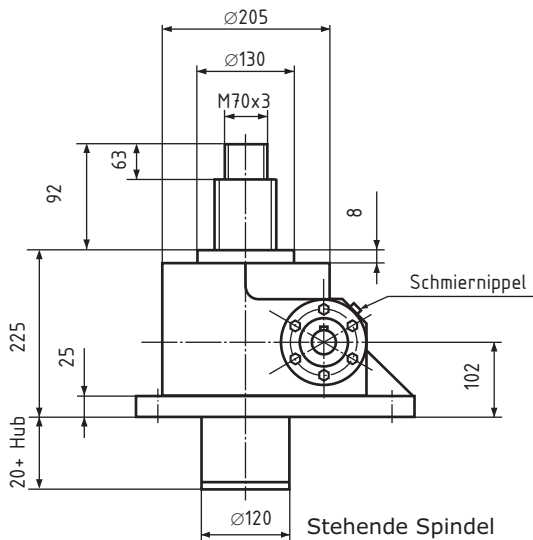
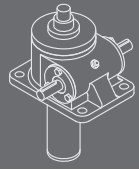
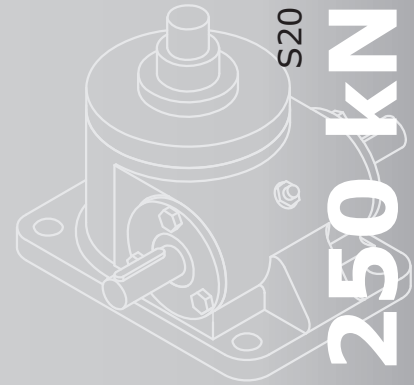
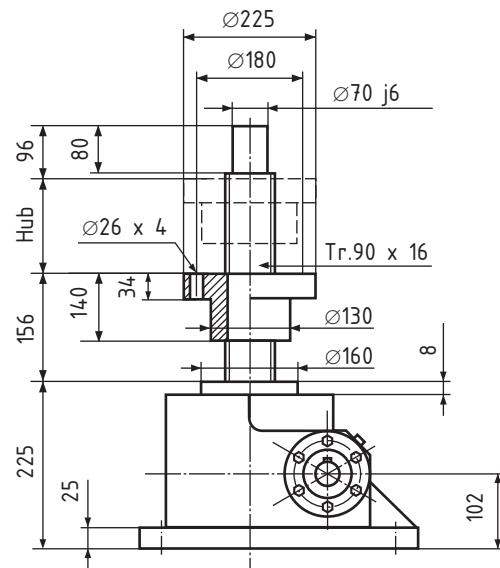


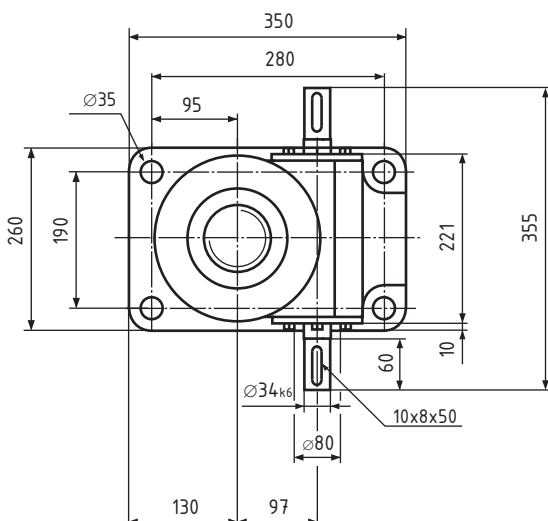
Gelenkkopf GSA VIII Z S20



Stehende Spindel



Rotierende Spindel



GS VIII S20

Trapez-Gewindespindel Tr. 90 x 16

Hubkraft 250kN

Übersetzung

Standard 32:1

Schnell 10,66:1

Hub pro Umdrehung

Standard 0,50 mm

Schnell 1,50 mm

Max. Eintriebsdrehzahl 1000 1/min

Wirkungsgrad ca. 22 %

Gehäusewerkstoff Stahl

Gewicht ca. 72 kg

N=Standard

R=Rotierende Spindel

Bestellbeispiel:

GS, Baugröße **VIII**, Variante **N**, **S20**, Hublänge **1750**

Bestellnummer: **GS VIII N S20 1750**