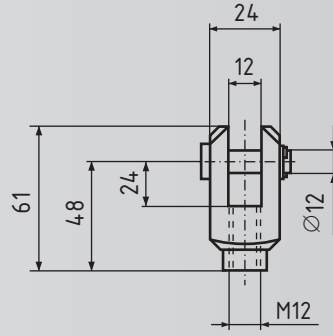
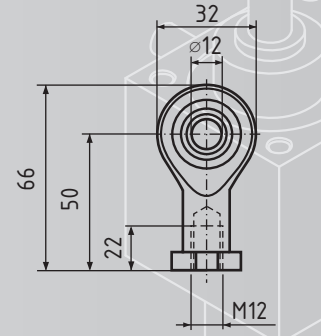


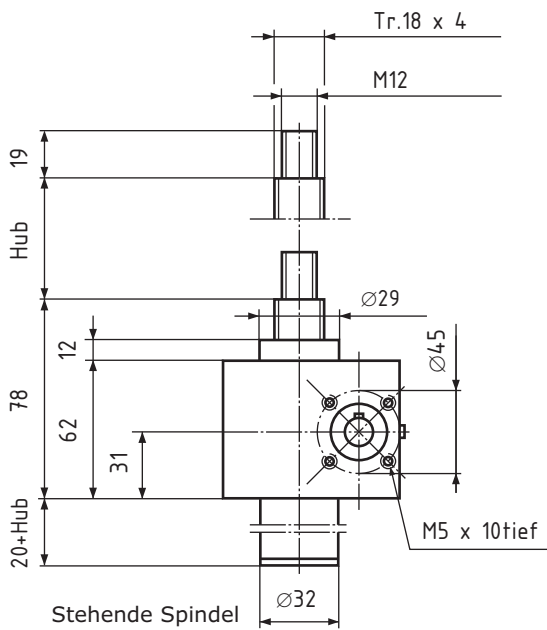
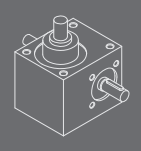
Gelenkkopf GSA I Z



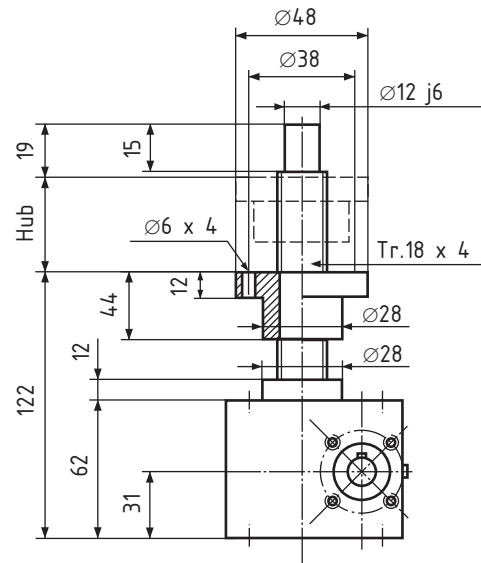
Gabelkopf GSA I G



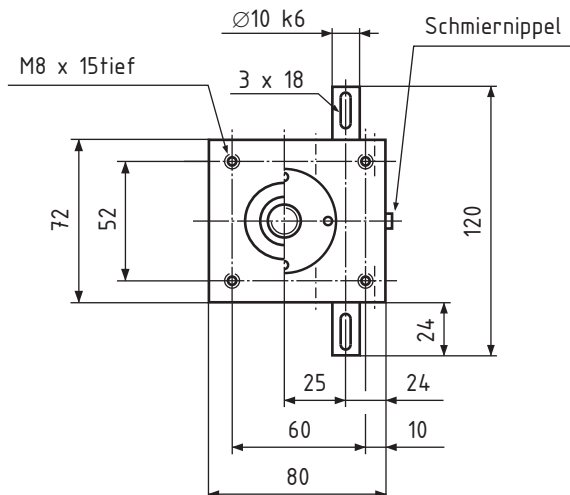
Kugelgelenkkopf GSA I K



Stehende Spindel



Rotierende Spindel



GS I

Trapez-Gewindespindel Tr. 18 x 4

Hubkraft 5kN

Übersetzung

Standard 16:1

Schnell 4:1

Hub pro Umdrehung

Standard 0,25 mm

Schnell 1,00 mm

Max. Eintriebsdrehzahl 1500 1/min

Wirkungsgrad ca. 32 %

Gehäusewerkstoff Alu

Gewicht ca. 2 kg

N=Standard

R=Rotierende Spindel

Bestellbeispiel:

GS, Baugröße **I**, Variante **R**, Hublänge **850**

Bestellnummer: **GS I R 850**