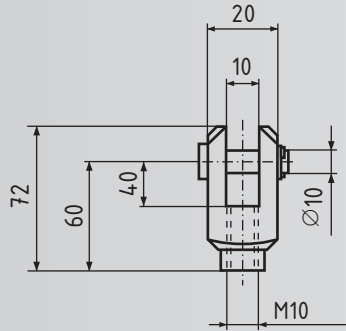
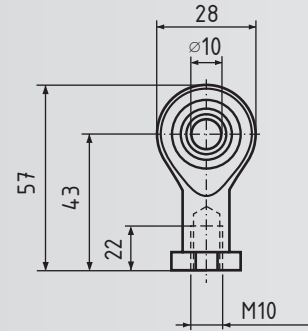


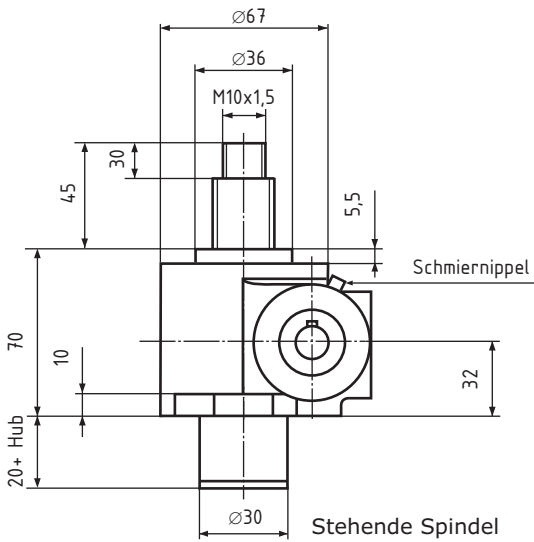
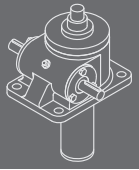
Gelenkkopf GSA 0 Z



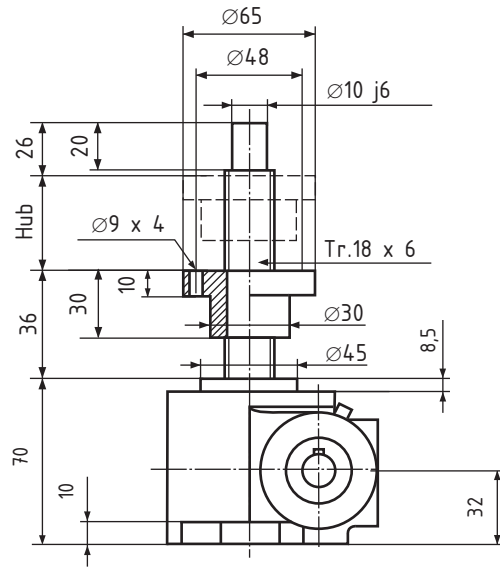
Gabelkopf GSA 0 G



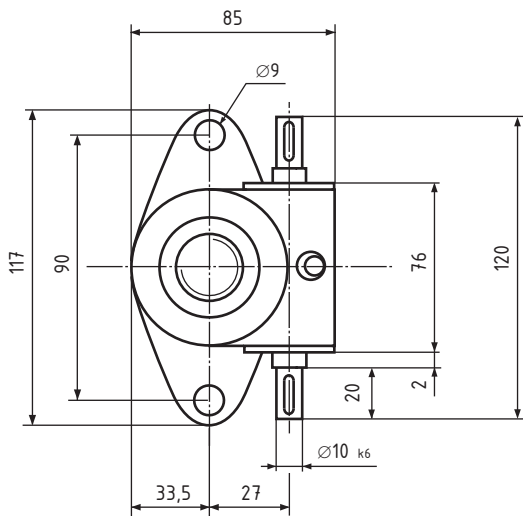
Kugelgelenkkopf GSA 0 K



Stehende Spindel



Rotierende Spindel



GS I S20

Trapez-Gewindespindel Tr. 18 x 6

Hubkraft 5kN

Übersetzung

Standard 20:1

Schnell 5:1

Hub pro Umdrehung

Standard 0,30 mm

Schnell 1,20 mm

Max. Eintriebsdrehzahl 1500 1/min

Wirkungsgrad ca. 30 %

Gehäusewerkstoff Alu

Gewicht ca. 0,6 kg

N=Standard

R=Rotierende Spindel

Bestellbeispiel:

GS, Baugröße **I**, Variante **R**, **S20**, Hublänge **120**

Bestellnummer: **GS I R S20 120**