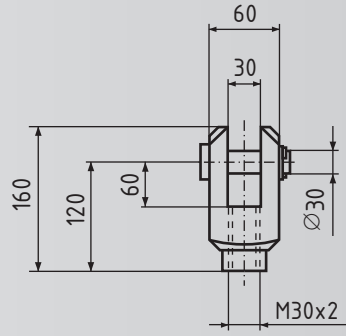
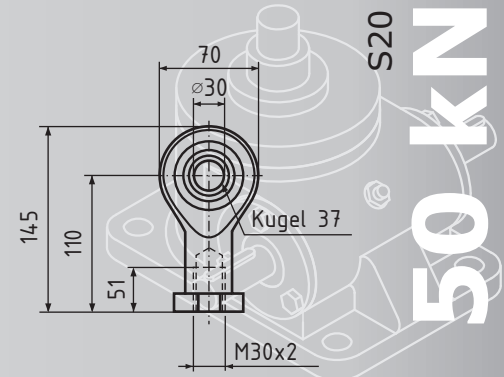


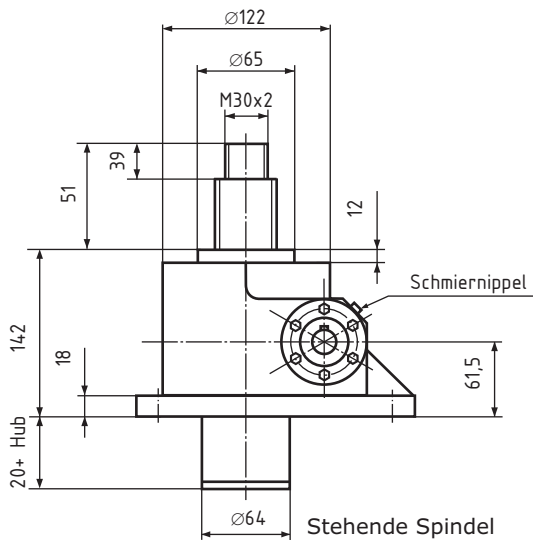
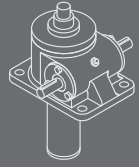
Gelenkkopf GSA IV Z



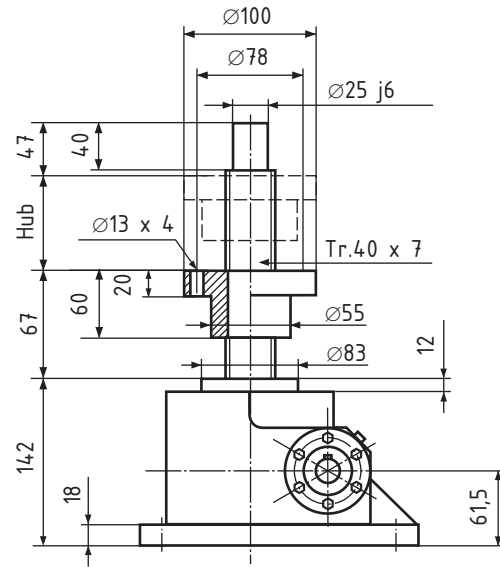
Gabelkopf GSA IV G



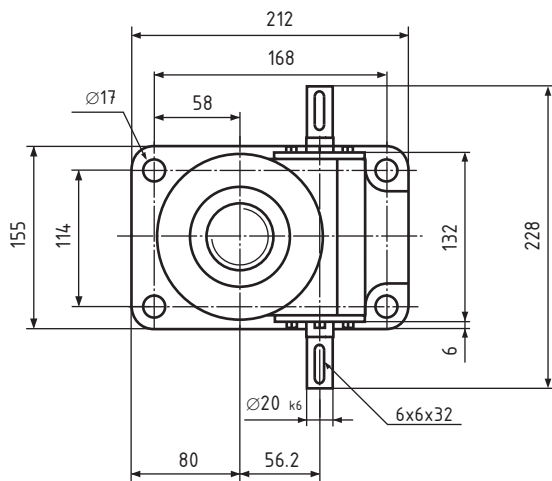
Kugelgelenkkopf GSA IV K



Stehende Spindel



Rotierende Spindel



## GS IV S20

Trapez-Gewindespindel Tr. 40 x 7

Hubkraft 50kN

### Übersetzung

Standard 24:1

Schnell 6:1

### Hub pro Umdrehung

Standard 0,292 mm

Schnell 1,167 mm

Max. Eintriebsdrehzahl 1500 1/min

Wirkungsgrad ca. 24 %

Gehäusewerkstoff Stahl

Gewicht ca. 17,3 kg

**N**=Standard

**R**=Rotierende Spindel

Bestellbeispiel:

**GS**, Baugröße **IV**, Variante **R**, **S20**, Hublänge **580**

Bestellnummer: **GS IV R S20 580**