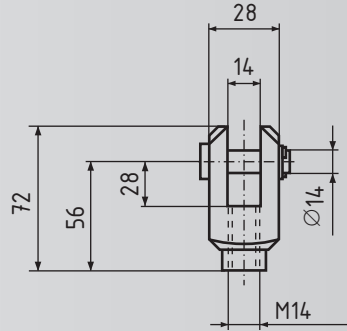
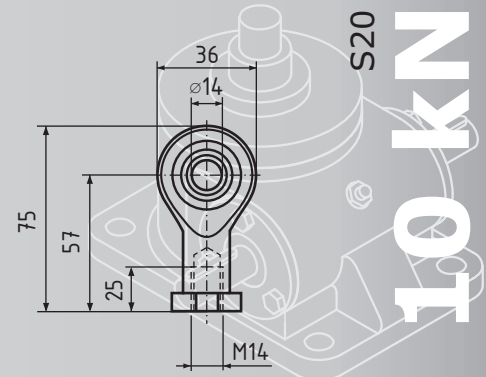


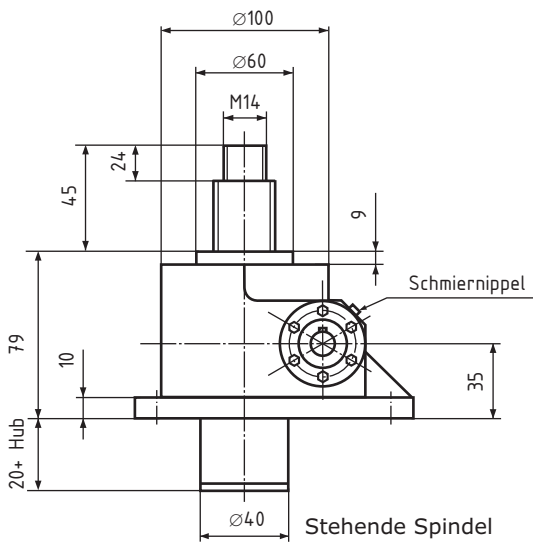
Gelenkkopf GSA II Z



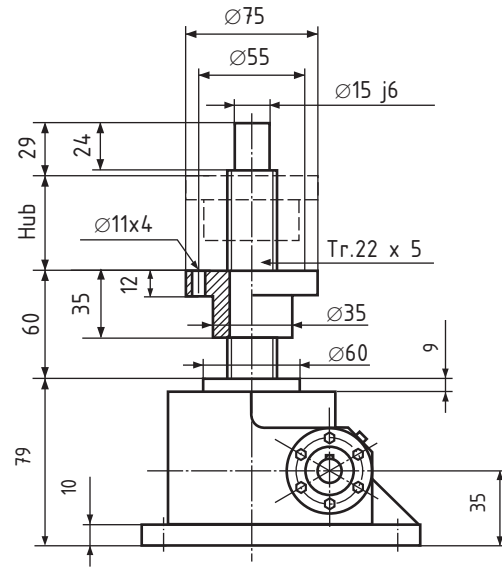
Gabelkopf GSA II G



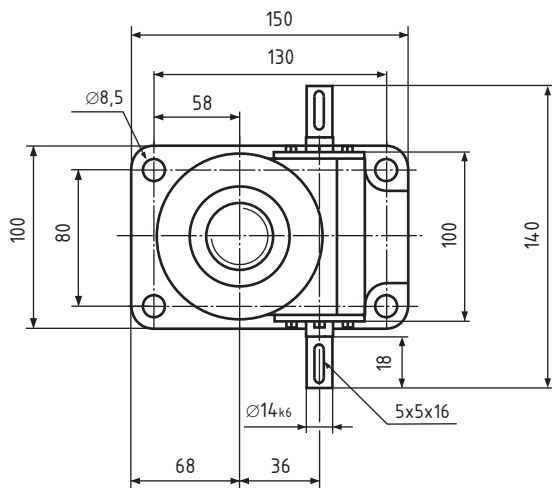
Kugelgelenkkopf GSA II K



Stehende Spindel



Rotierende Spindel



GS II S20

Trapez-Gewindespindel Tr. 22 x 5

Hubkraft 10kN

Übersetzung

Standard 20:1

Schnell 5:1

Hub pro Umdrehung

Standard 0,25 mm

Schnell 1,00 mm

Max. Eintriebsdrehzahl 1500 1/min

Wirkungsgrad ca. 29 %

Gehäusewerkstoff Alu

Gewicht ca. 2,7 kg

N=Standard

R=Rotierende Spindel

Bestellbeispiel:

GS, Baugröße **II**, Variante **N**, **S20**, Hublänge **420**

Bestellnummer: **GS II N S20 420**