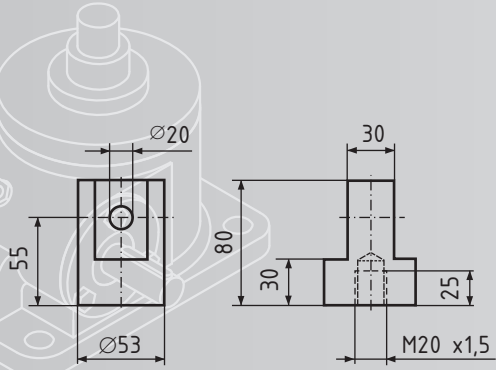
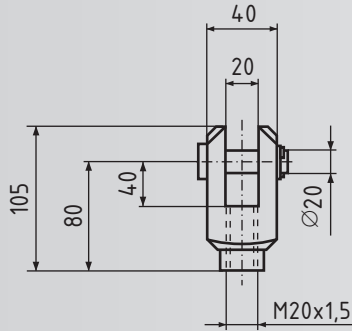


Spindelhubgetriebe GS III S20

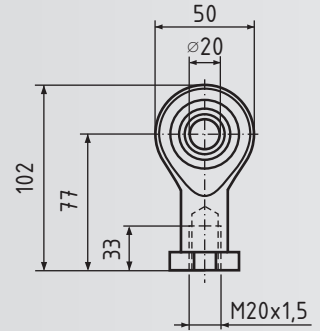
25 kN
S20



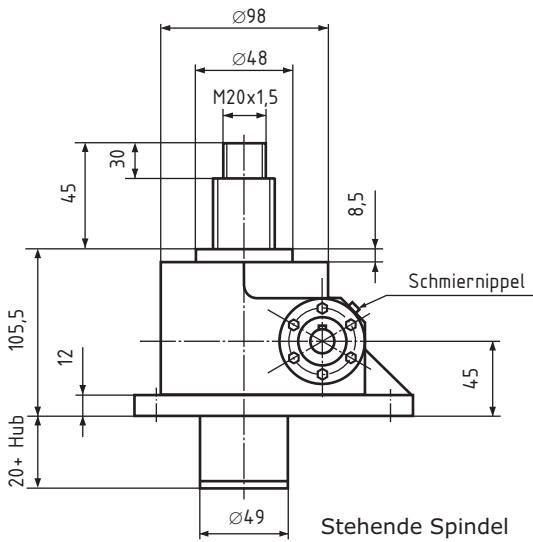
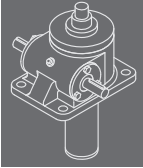
Gelenkkopf GSA III Z



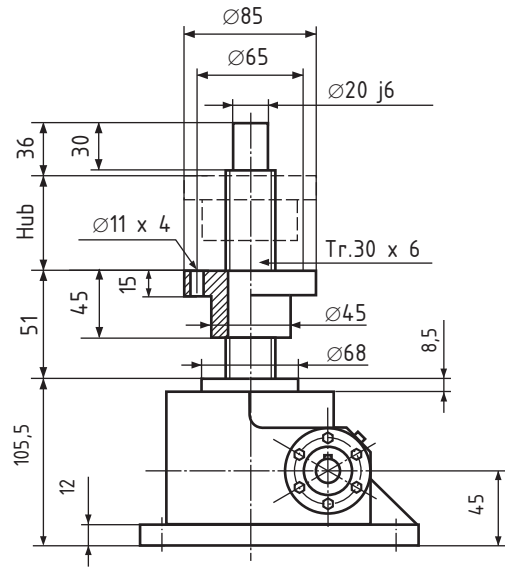
Gabelkopf GSA III G



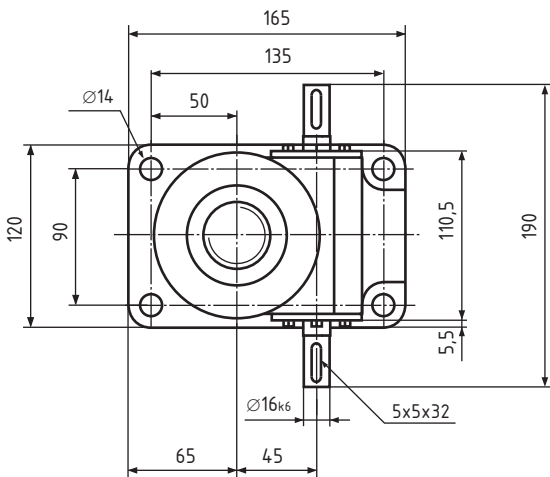
Kugelgelenkkopf GSA III K



Stehende Spindel



Rotierende Spindel



GS III S20

Trapez-Gewindespindel Tr. 30 x 6

Hubkraft 25kN

Übersetzung

Standard 24:1

Schnell 6:1

Hub pro Umdrehung

Standard 0,25 mm

Schnell 1,00 mm

Max. Eintriebsdrehzahl 1500 1/min

Wirkungsgrad ca. 27 %

Gehäusewerkstoff Stahl

Gewicht ca. 8 kg

N=Standard

R=Rotierende Spindel

Bestellbeispiel:

GS, Baugröße **III**, Variante **R**, **S20**, Hublänge **1800**

Bestellnummer: **GS III R S20 1800**